

## POCT System



## System Overview

### Solutions for Posterior Stabilization

The Centurion® Posterior Occipital Cervico-Thoracic System offers versatile solutions for posterior stabilization through an assortment of multi-axial screws, hooks, rods, lateral offset adapters, and occipital plates. The system is designed to stabilize the occiput, cervical and thoracic spine during fusion.

Titanium multi-axial screws achieve 100° of conical angulation. The drive body rotates separate from the rod saddle and features a notch allowing for a degree of angulation. 3.5mm, 4.0mm, 4.5mm and 5.0mm screw diameters provide adequate grip in larger vertebrae. The 3.5mm and 4.0mm multi-axial screws are available with smooth shank and standard threads.

The occipital plate provides surgeons greater flexibility in rod contouring by incorporating translating and rotating saddles into three different plate size options.

The multi-plane adjustable cross connectors are pre-assembled and utilize a drop-in design for ease of insertion ranging in sizes of 20mm to 50mm.

In order to reduce manipulation, multiple 3.5mm rod options are available. Titanium or cobalt chrome rods are provided in the standard set configurations.

Lateral offset adapters allow the construct to accommodate unique patient anatomy with minimal disruption and trauma to the vertebrae.

The ergonomic instrumentation facilitates implant placement and aids in easy insertion.



## SYSTEM OVERVIEW

### Occipital Plate:

- Small – 20mm-30mm Rod Spacing
- Medium – 30mm-40mm Rod Spacing
- Large – 40mm-50mm Rod Spacing



### Multi-Axial Screws:

- 3.5mm and 4.0mm – 10mm-52mm (2mm increments)
- 4.5mm and 5.0mm – 10mm-50mm (5mm increments)
- Maximum 50° angulation (from screw axis) when aligned with inferior notch as indicated by the laser line.; 33° in all other positions
- The Drive Body rotates for dorsal height adjustment and extra angulation when aligned with the inferior notch
- Rod Saddles are color coded to match the corresponding drills and taps



### 3.5mm and 4.0mm Smooth Shank Screw:

- 22mm-40mm (2mm increments)
- Constant 16mm threaded region



### 4.5mm and 5.0mm Occipital Bone Screw and Rescue Screw:

- Rescue Screws are identified by non-anodized heads
- 6mm - 14mm (2 increments)



### Set Screw:

- Universal set screw for all Multi-Axial Screws, Hooks, and Occipital Plate



### 3.5mm Titanium or Cobalt Chrome Rod:

- 70mm, 120mm, 200mm lengths



### Pre-Lordosed Rod:

- 30mm-120mm (5mm increments)



### Titanium or Cobalt Chrome Transition Rod:

- 3.5mm to 5.5mm
- 200/200mm, 200/300mm, 300/300mm, 200/400mm lengths



### Titanium or Cobalt Chrome Occipital Rod:

- 3.5mm
- 110°, 120°, 135° angles



### Parallel Rod Connector and Axial Rod Connector:

- 3.5mm / 5.5mm Parallel Rod Connector
- 3.5mm / 5.5mm Axial Rod Connector



### Lateral Offset Adapter:

- 10mm offset
- Accommodates rod attachment of non-aligned screw placement



### Cervical Hook:

- 4.5mm and 6.0mm throat



### Cross Connector:

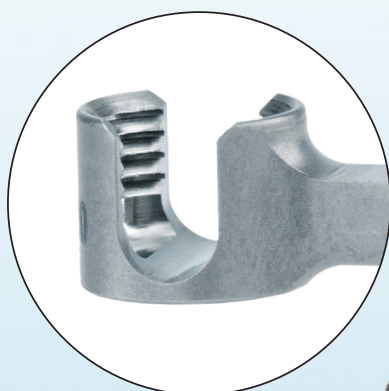
- 20mm to 50mm (5mm increments)



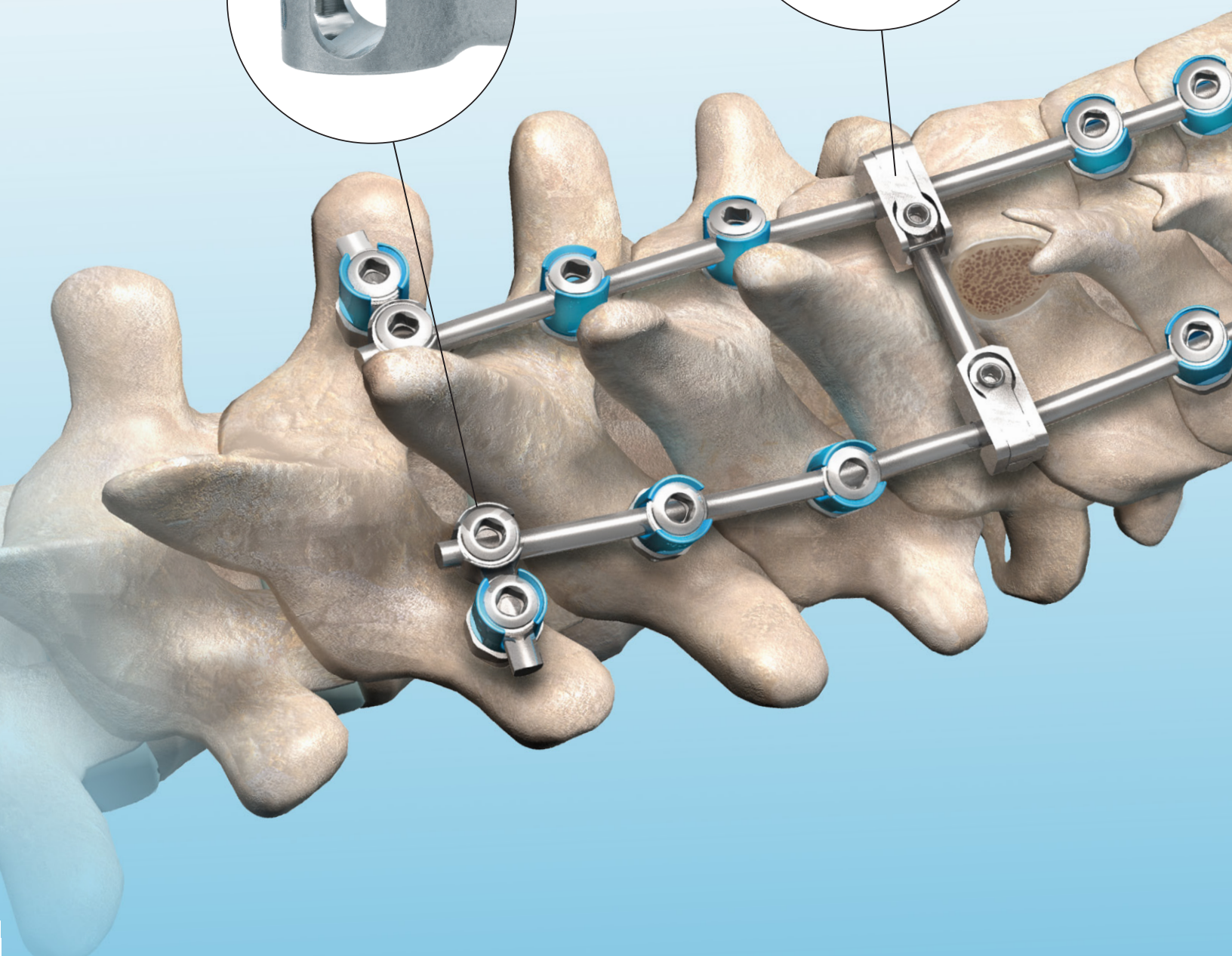
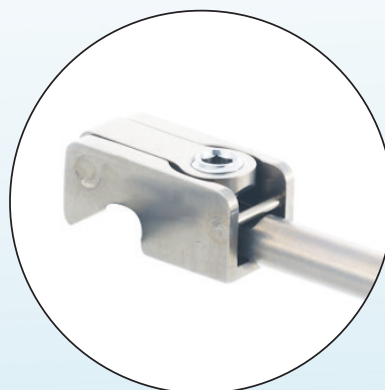


## Ergonomic Instrumentation Facilitates Implant Placement and Aids in Easy Insertion.

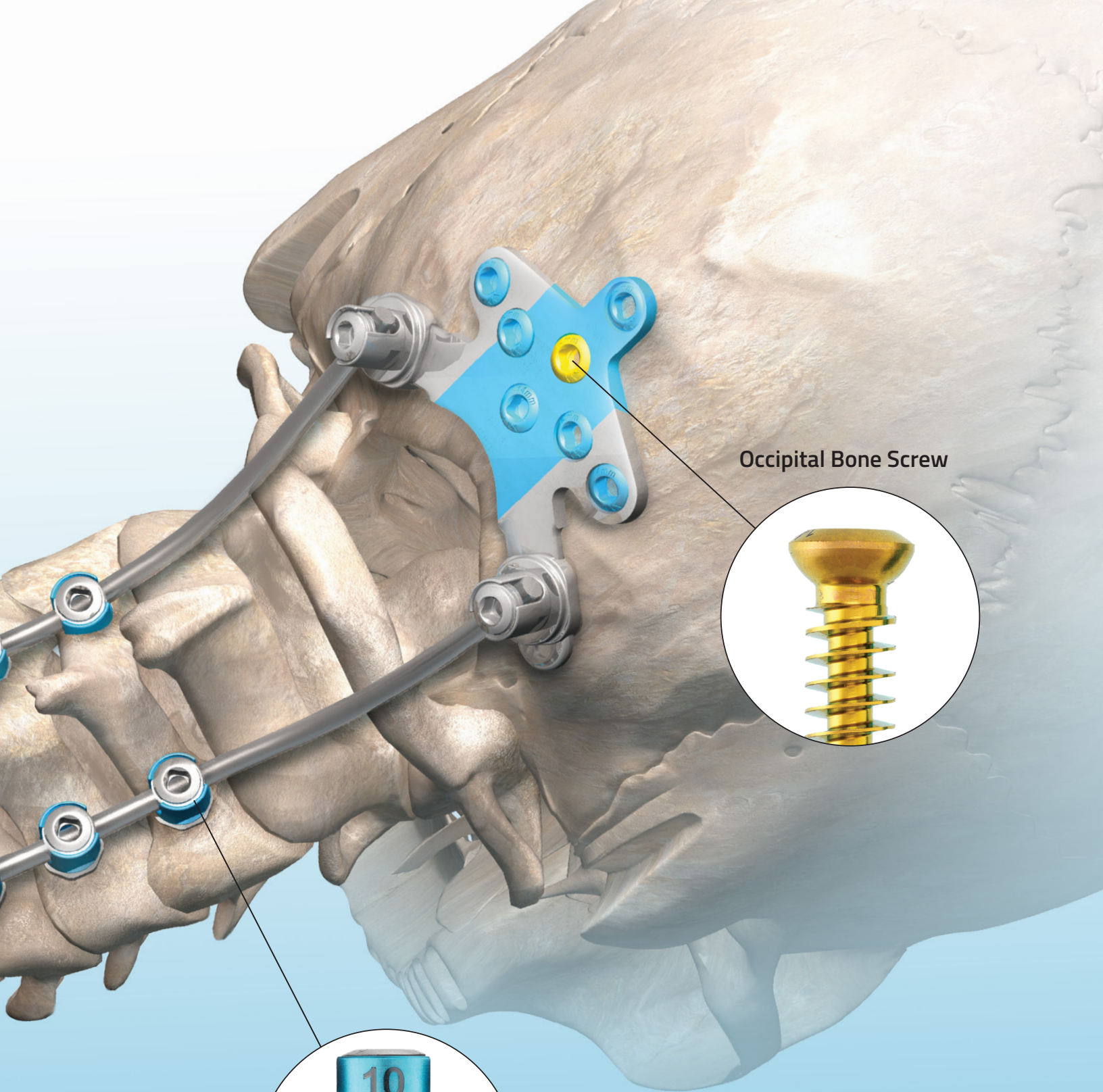
Lateral Offset Adapter



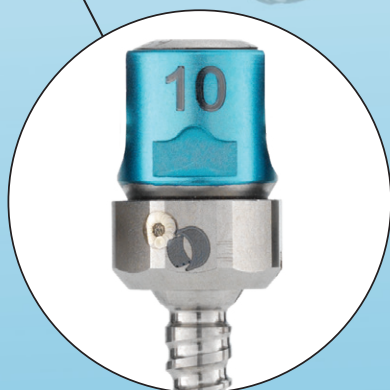
Cross Connectors







Occipital Bone Screw



Multi-Axial Screw

## CENTURION CASE

### Part Number List

Part #	Description	Qty
<b>Instrument Case Core System</b>		
69-1094	<b>Instrument Case</b> (includes all trays, caddies, base & lid)	1
69-8121	<b>Top Tray, Instrument Case</b>	1
69-1001	Awl	1
69-1002	Probe	1
69-1005	Dual Sounder	1
69-1006	Depth Gauge	1
69-1015	3.5mm Drill	2
69-1016	4.0mm Drill	2
69-1017	4.5mm Drill	2
69-1018	5.0mm Drill	2
69-1025	3.5mm Bone Tap	2
69-1026	4.0mm Bone Tap	2
69-1027	4.5mm Bone Tap	2
69-1028	5.0mm Bone Tap	2
69-1032	Modular In-Line Handle	3
69-1036	Multi-Axial Screw Driver	2
69-8122	<b>Middle Tray, Instrument Case</b>	1
65-1055	70mm Trial Rod	2
65-1056	120mm Trial Rod	2
65-1057	200mm Trial Rod	2
69-1010	Drill Guide	1
69-1045	Off Axis Driver	1
69-1046	Adjustment Driver	1
69-1049	Rod Rocker	1
69-1060	Set Screw Inserters Dual Sided	2
69-1061	Set Screw Driver	2
69-1063	Set Screw Inserters Single Sided	2
69-1065	Torque Limiting Driver	1
69-1066	Counter Torque Wrench	1
69-1072	Rod Reducer	1
69-8124	<b>Bottom Tray, Instrument Case</b>	1
69-1042	Rod Bender	1
69-1048	Compressor	1
69-1070	Distractor	1
69-1101	Cross Connector Sizer	1
65-1082	Cross Connector Set Screw Driver	1
65-1083	Cross Connector Torque Limiting Driver Handle	1

### Implant Case Core System

69-1092	Implant Case (includes all trays, caddies, base, and lid)	1
69-8221	<b>Top Tray, Implant Case</b>	1
69-0070	3.5mm Rod, CoCr, 70mm	2
69-0120	3.5mm Rod, CoCr, 120mm	2
69-4070	3.5mm Rod, Ti, 70mm	6
69-4120	3.5mm Rod, Ti, 120mm	4
69-8201	Set Screw Caddy	1
69-2001	Set Screw	30
69-8202	<b>3.5mm Multi-Axial Screw Caddy</b>	1
69-3310	3.5mm x 10mm Multi-Axial Screw	8
69-3312	3.5mm x 12mm Multi-Axial Screw	16
69-3314	3.5mm x 14mm Multi-Axial Screw	16
69-3316	3.5mm x 16mm Multi-Axial Screw	8
69-3318	3.5mm x 18mm Multi-Axial Screw	4
69-3320	3.5mm x 20mm Multi-Axial Screw	4
69-3322	3.5mm x 22mm Multi-Axial Screw	4
69-3324	3.5mm x 24mm Multi-Axial Screw	4
69-3326	3.5mm x 26mm Multi-Axial Screw	4
69-3328	3.5mm x 28mm Multi-Axial Screw	4
69-3330	3.5mm x 30mm Multi-Axial Screw	4
69-8203	<b>4.0mm Multi-Axial Screw Caddy</b>	1

### Part Number List (Cont.)

Part #	Description	Qty
69-3410	4.0mm x 10mm Multi-Axial Screw	4
69-3412	4.0mm x 12mm Multi-Axial Screw	8
69-3414	4.0mm x 14mm Multi-Axial Screw	8
69-3416	4.0mm x 16mm Multi-Axial Screw	4
69-3418	4.0mm x 18mm Multi-Axial Screw	2
69-3420	4.0mm x 20mm Multi-Axial Screw	2
69-3422	4.0mm x 22mm Multi-Axial Screw	2
69-3424	4.0mm x 24mm Multi-Axial Screw	2
69-3426	4.0mm x 26mm Multi-Axial Screw	2
69-3428	4.0mm x 28mm Multi-Axial Screw	2
69-3430	4.0mm x 30mm Multi-Axial Screw	2
69-8204	<b>4.5mm &amp; 5.0mm Multi-Axial Screw Caddy</b>	1
69-3520	4.5mm x 20mm Multi-Axial Screw	4
69-3525	4.5mm x 25mm Multi-Axial Screw	4
69-3530	4.5mm x 30mm Multi-Axial Screw	4
69-3535	4.5mm x 35mm Multi-Axial Screw	4
69-3540	4.5mm x 40mm Multi-Axial Screw	4
69-3545	4.5mm x 45mm Multi-Axial Screw	4
69-3625	5.0mm x 25mm Multi-Axial Screw	4
69-3630	5.0mm x 30mm Multi-Axial Screw	4
69-3635	5.0mm x 35mm Multi-Axial Screw	4
69-3640	5.0mm x 40mm Multi-Axial Screw	4
69-3645	5.0mm x 45mm Multi-Axial Screw	4
69-8205	<b>Smooth Shank Screw Caddy</b>	1
69-3126	3.5mm x 26mm Multi-Axial Screw, Smooth Shank	4
69-3128	3.5mm x 28mm Multi-Axial Screw, Smooth Shank	4
69-3130	3.5mm x 30mm Multi-Axial Screw, Smooth Shank	4
69-3132	3.5mm x 32mm Multi-Axial Screw, Smooth Shank	4
69-3226	4.0mm x 26mm Multi-Axial Screw, Smooth Shank	2
69-3228	4.0mm x 28mm Multi-Axial Screw, Smooth Shank	2
69-3230	4.0mm x 30mm Multi-Axial Screw, Smooth Shank	2
69-3232	4.0mm x 32mm Multi-Axial Screw, Smooth Shank	2
69-3234	4.0mm x 34mm Multi-Axial Screw, Smooth Shank	2
69-3234	4.0mm x 34mm Multi-Axial Screw, Smooth Shank	2
69-8207	<b>Hook and Connector Caddy</b>	1
69-3010	4.5mm Cervical Hook	6
69-3011	6.0mm Cervical Hook	6
69-6310	10mm Lateral Offset Adapter	6
69-6405	3.5mm/5.5mm Parallel Rod Connector	2
69-6425	3.5mm/5.5mm Axial Rod Connector	2
69-8208	<b>Cross Connector Caddy</b>	1
69-5420	20mm Cross Connector	2
69-5425	25mm Cross Connector	2
69-5430	30mm Cross Connector	2
69-5435	35mm Cross Connector	2
69-5440	40mm Cross Connector	2
69-5445	45mm Cross Connector	2
69-5450	50mm Cross Connector	2
69-8222	<b>Bottom Tray, Implant Case and Instruments</b>	1
52-1035	Rod Connector Inserters	1
67-0001	Hook Holder - Straight	1
67-0003	Hook Holder - Angled	1
69-0022	3.5mm/ 5.5mm Transition Rod, CoCr, 200mm/ 200mm	3
69-0040	Laminar Elevator	1
69-1038	Rod Connector Driver	1
69-1041	Rod Cutter	1
69-1043	Rod Holder	1
69-0222	3.5mm/ 5.5mm Transition Rod, Ti, 200mm/ 200mm	3
69-1037	Rod Connector Torque Driver	1
69-0200	3.5mm Rod, CoCr, 200mm	2
69-4200	3.5mm Rod, Ti, 200mm	2

## OCCIPITAL CASE

Instruments		
Part #	Description	Qty
<b>Instrument Case Core System</b>		
69-1093	<b>Occipital Case</b> (includes all trays, caddies, base & lid)	1
69-8321	Top Tray, Occipital Case	1
69-0110	Occipital Rod, CoCr 110°	4
69-0112	Occipital Rod, CoCr 120°	4
69-0135	Occipital Rod, CoCr 135°	4
69-2140	Occipital Plate Assy, 20mm - 30mm	2
69-2141	Occipital Plate Assy, 30mm - 40mm	2
69-2142	Occipital Plate Assy, 40mm - 50mm	2
69-3110	Occipital Rod, Ti 110°	4
69-3112	Occipital Rod, Ti 120°	4
69-3135	Occipital Rod, Ti 135°	4
69-8301	<b>Occipital Bone &amp; Set Screw Caddy</b>	
69-2001	Set Screw	12
69-2006	6mm Occipital Bone Screw, Primary	6
69-2008	8mm Occipital Bone Screw, Primary	6
69-2010	10mm Occipital Bone Screw, Primary	6
69-2012	12mm Occipital Bone Screw, Primary	6
69-2014	14mm Occipital Bone Screw, Primary	6
69-2206	6mm Occipital Bone Screw, Rescue	2
69-2208	8mm Occipital Bone Screw, Rescue	2
69-2210	10mm Occipital Bone Screw, Rescue	2
69-2212	12mm Occipital Bone Screw, Rescue	2
69-2214	14mm Occipital Bone Screw, Rescue	2
69-8322	<b>Bottom Tray, Occipital Case</b>	
69-0005	Plate Holder	1
69-0006	Occipital Drill	2
69-0042	Occipital Plate Bender	1
69-0043	Anvil	1
69-0060	Occipital Bone Screw Inserter	2
69-0067	Handle Adapter	1
69-0068	Occipital Driver, Straight	2
69-0069	Occipital Driver, Angled	2
69-0106	Occipital Tap	2
69-0109	Occipital Counter Torque Wrench	1
69-1112	Occipital Drill Guide	1
69-1032	Modular In-Line Handle	1
69-1062	Occipital Set Screw Driver	1

### Order by Request

69-1031	<b>Modular Ball Handle</b>
69-1033	Occipital Modular In-Line Handle

## PRE-LORDOSED ROD CADDY - ORDER BY REQUEST

Implants		
Part #	Description	Qty
<b>Implant Caddy Core System</b>		
69-1095	Pre-Lordosed Rod Caddy	1
69-6030	3.5mm Lordosed Rod, Ti, 30mm	2
69-6035	3.5mm Lordosed Rod, Ti, 35mm	2
69-6040	3.5mm Lordosed Rod, Ti, 40mm	2
69-6045	3.5mm Lordosed Rod, Ti, 45mm	2
69-6050	3.5mm Lordosed Rod, Ti, 50mm	2
69-6055	3.5mm Lordosed Rod, Ti, 55mm	2
69-6060	3.5mm Lordosed Rod, Ti, 60mm	2
69-6065	3.5mm Lordosed Rod, Ti, 65mm	2
69-6070	3.5mm Lordosed Rod, Ti, 70mm	2
69-6075	3.5mm Lordosed Rod, Ti, 75mm	2
69-6080	3.5mm Lordosed Rod, Ti, 80mm	2
69-6085	3.5mm Lordosed Rod, Ti, 85mm	2
69-6090	3.5mm Lordosed Rod, Ti, 90mm	2
69-6095	3.5mm Lordosed Rod, Ti, 95mm	2
69-6100	3.5mm Lordosed Rod, Ti, 100mm	2
69-6105	3.5mm Lordosed Rod, Ti, 105mm	2
69-6110	3.5mm Lordosed Rod, Ti, 110mm	2
69-6115	3.5mm Lordosed Rod, Ti, 115mm	2
69-6120	3.5mm Lordosed Rod, Ti, 120mm	2

\*Items in blue available upon request only.

Please visit [Orthofix.com/IFU](https://Orthofix.com/IFU) for full information on indications for use, contraindications, warnings, precautions, adverse reactions and sterilization.

Caution: Federal law (USA) restricts this device to sale by or on the order of a physician. Proper surgical procedure is the responsibility of the medical professional. Operative techniques are furnished as an informative guideline. Each surgeon must evaluate the appropriateness of a technique based on his or her personal medical credentials and experience.



Orthofix  
3451 Plano Parkway  
Lewisville, Texas 75056-9453 USA  
1.214.937.3199  
1.888.298.5700  
[www.orthofix.com](http://www.orthofix.com)



Medical Device Safety Services (MDSS):  
Schiffgraben 41  
30175, Hannover  
Germany  
+49 511 6262 8630  
[www.mdss.com](http://www.mdss.com)

**Rx Only**  
CE 2797

Orthofix products or services referenced herein are trademarks or registered trademarks of Orthofix Medical Inc. and its group of companies. Any rights not expressly granted herein are reserved.