

# SiLO TFX™

## The True Triangular SI Fusion System

Stability in 3 dimensions. Precision in every plane.



SiLO TFX™ was uniquely designed to transfix the SI joint. It consists of a cone transfixing bridge, a Sacral screw and an Ilium screw.

All three elements together create a secure method to help your patients suffering from SI joint dysfunction.

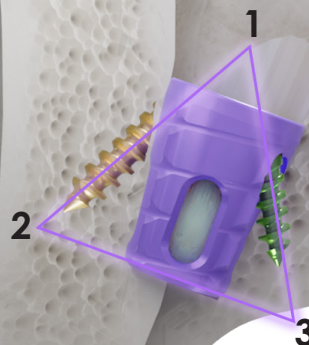
The SiLO TFX™ is inserted through a posterior approach in alignment with the SI joint, accompanied by bone graft to ensure fusion.

**Only one SiLO TFX™ System is needed to stabilize the SI joint!**

## 3 Points of Fixation that follow AO principles

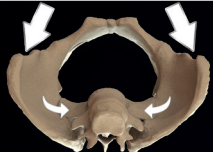
The fundamental principles of arthrodesis include:

- 1. Properly expose and prepare the joint surfaces.**
  - Decortication of cortical surface of the bone and removal of any interarticular cartilage and tissue.
- 2. Coaptation. Align the surfaces together.**
  - Bridging the cancellous bone with structure and biologic to allow for fusion.
- 3. Rigid fixation of the surfaces until union.**
  - Secure the surfaces firmly, keep the surfaces tightly held in place until they fuse.

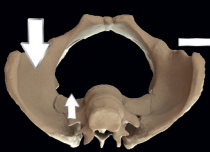


## BRIDGING THE GAP FROM PAIN TO RELIEF

## PROVOCATIVE TEST



Distraction



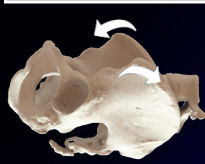
Thigh Thrust



F.A.B.E.R.



Compression



Gaenslen's

## ADVANTAGES FOR YOUR PATIENTS

- Less invasive procedure
- Short procedure duration
- Faster recovery time
- Covered by Medicare and most insurance carriers.\*

## ADVANTAGES FOR YOUR PRACTICE

- Approved procedure
- Outpatient procedure
- Retain your patients
- Sacroiliac joint pain develops in 75% of lumbar fusions
- 25% of the time, Sacroiliitis is the cause of low back pain
- Grow your practice

## CANDIDATES FOR SACROILIAC FUSION

- Failed combination of previous treatments
- Extreme chronic pain
- Postpartum back pain
- Adjacent segment disease
- Failed required diagnostic exams (provocative testing and fluoroscopic SI injection)
- Trauma



# BRIDGING THE GAP FROM PAIN TO RELIEF