

System	ENDO	MIS	OPEN
Implant Lengths	26mm & 30mm	26mm & 30mm	26mm & 30mm
Implant Insertion Profiles (HxW)	7x7mm	7x7mm	7x7mm & 9x7mm
Implant Maximum Expanded Profiles (HxW)	12x11mm	12x11mm	12x11mm & 14x11mm
Lordosis Options	0° & 6°	0° & 6°	0° & 6°
0° Height Options (in 1mm increments)	8 to 11mm	8 to 11mm	8 to 14mm
6 ° Height Options (in 1mm increments)	10 to 12mm	10 to 12mm	10 to 14mm
Tubular Retractors	Round	Square	N/A
Tubular Retractor Lengths	140mm & 200mm*	200mm	N/A
Tubular Retractor Dimensions	11mm OD, 10mm ID	9x9mm OD	N/A

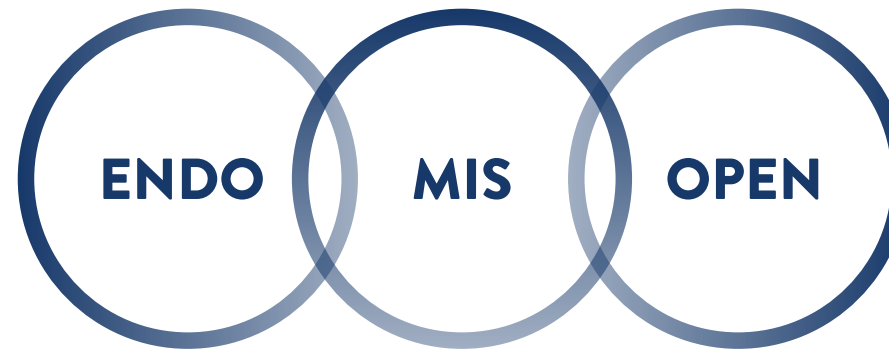
Instrument Compatibility	ENDO	MIS	OPEN
Disc Drill	✓	✓	
Static Shavers	✓		✓
Expandable Shaver	✓	✓	✓ *
MIS Curettes	✓	✓ *	
Articulating Curettes	✓	✓	
Wire Brushes	✓	✓	
Expandable Height Trial	✓		✓

* Available by special order. Not included in standard set.

INDICATIONS

The FlareHawk® Interbody Fusion System is indicated for spinal intervertebral body fusion with autogenous bone graft and/or allogeneic bone graft composed of cancellous and/or corticocancellous bone in skeletally mature individuals with degenerative disc disease (DDD) at one or two contiguous levels from L2 to S1, following discectomy. DDD is defined as discogenic back pain with degeneration of the disc confirmed by history and radiographic studies. These patients should have at least six (6) months of nonoperative treatment. Additionally, these patients may have up to Grade 1 spondylolisthesis or retrolisthesis at the involved level(s). FlareHawk system spacers are intended to be used with supplemental fixation instrumentation, which has been cleared for use in the lumbar spine.

Refer to the FlareHawk Interbody Fusion System Instructions-for-Use (IFU) for complete contraindications, warnings, and precautions.



Integrity Implants Inc.
 354 Hiatt Drive, Palm Beach Gardens, FL 33418 USA
 Phone: 800 201 9300 or +1 561 529 3861
 Email: customerservice@integrityimplants.com


**INTEGRITY
 IMPLANTS**
 www.integrityimplants.com
 SS-00009 RevA

IMPLANT

FlareHawk7 is a bi-directionally expandable lumbar fusion device that is inserted at an ultra-low profile of 7mm wide and deploys with simultaneous cranial-caudal and medial-lateral expansion.



PREPARATION

MIS CURETTES

Patented curettes with modular handles and shaft diameters compatible with nearly every endoscope working channel on the market to deliver the opportunity for real-time visualization of disc and endplate preparation.



APPROACH

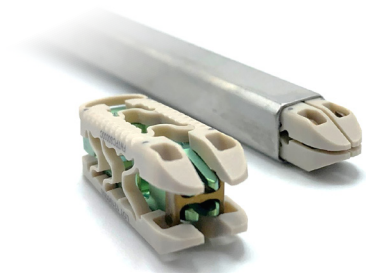
ENDO TLIF

Leverage endoscopic access while providing instruments necessary for directly visualizing disc preparation and delivering the implant.



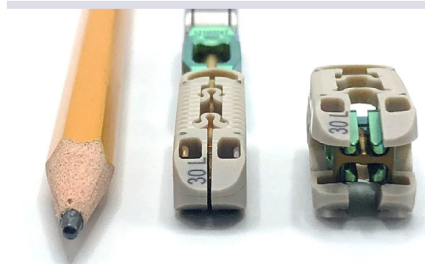
MIS

Designed to provide safe access to the disc space through Kambin's Triangle while also preserving normal anatomy.



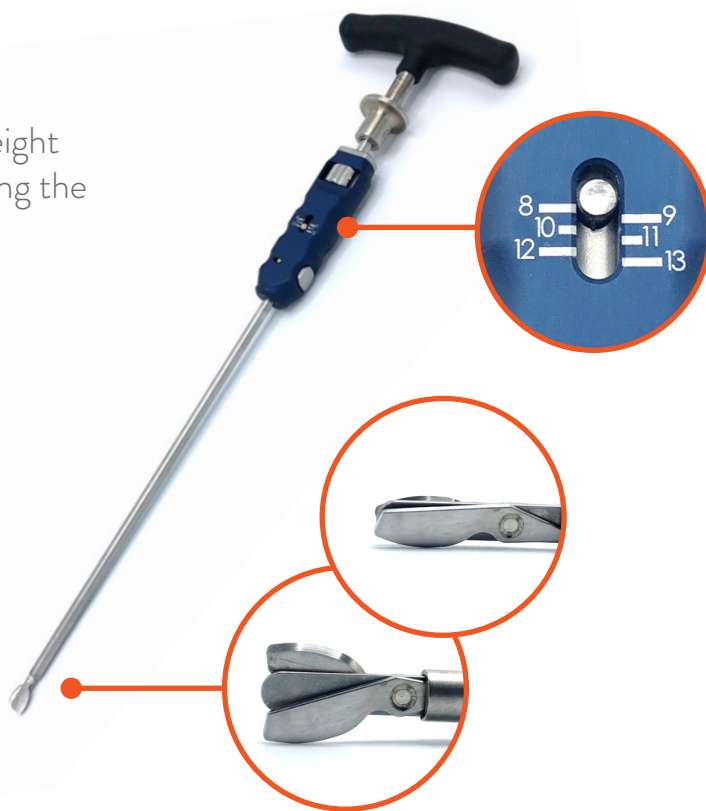
MINI-OPEN

Minimize the need for neural retraction by inserting an implant similar in profile to a pencil past the neural structures.



EXPANDABLE SHAVER

Adjustable shaver blades provide disc height assessment while simultaneously prepping the disc space and endplates.



EXPANDABLE TRIAL

Trial the implant and distract the disc space without the need for multiple nerve root passes.

