



CoreLink.
The Source for Spine™

INSIGHT | PERFORMANCE | VALUE

FLXFIT® 15

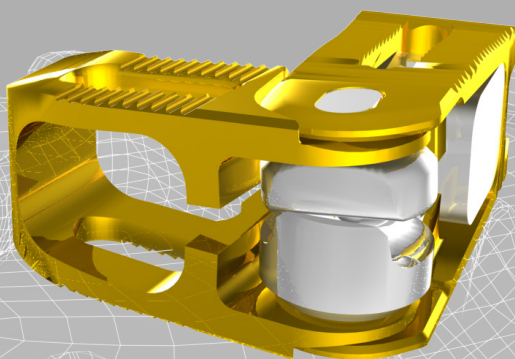
ARTICULATING EXPANDABLE POSTERIOR LUMBAR SPACER

EXPANDABLE

Up to 15° of controlled
and continuous
lordotic expansion

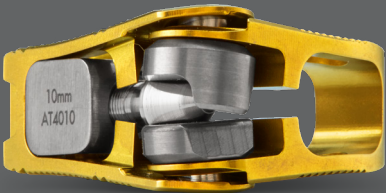
ARTICULATING

Integrated articulation
for optimal anterior
midline placement



THE FLXFIT® 15 ADVANTAGE

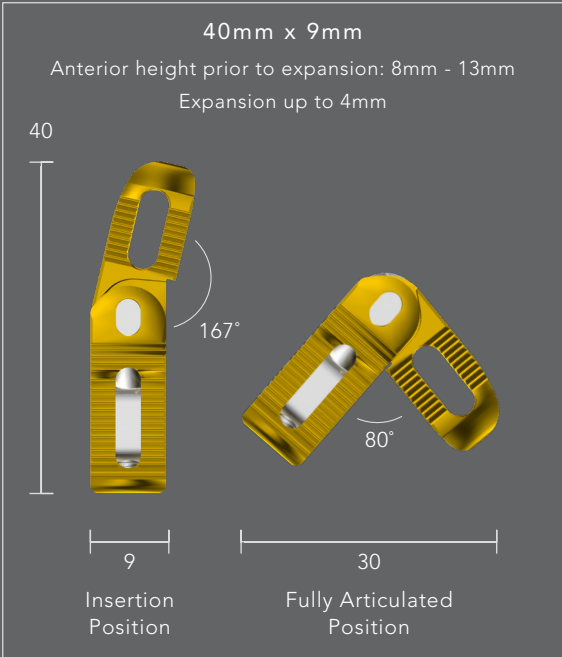
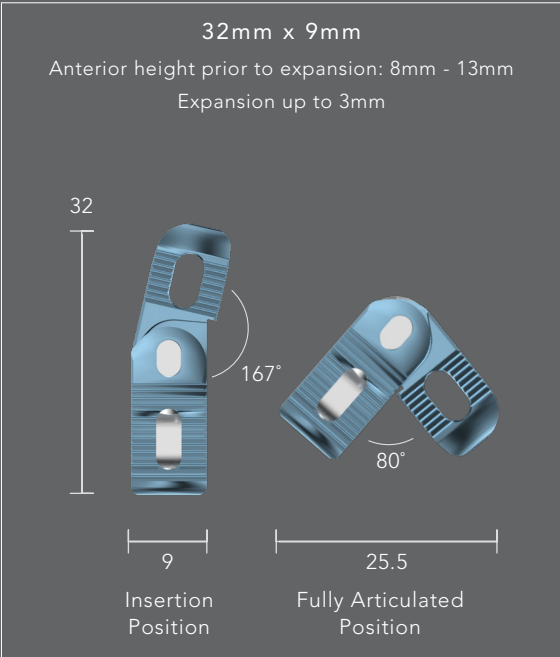
FLXfit15 is an expandable and articulating posterior lumbar interbody that allows for controlled, in-situ expansion.



SYSTEM FEATURES

- Up to 4mm of anterior height expansion
- Up to 15° of controlled and continuous lordotic expansion
- Open device architecture enables graft material packing
- Bullet-nosed to optimize insertion
- Inferior and superior surfaces include teeth intended to reduce cage migration
- Single instrument for insertion and expansion of cage

FLXFIT15 FOOTPRINT DIMENSIONS



CAGE AND CARTRIDGE PART NUMBERS

CATALOG #	DESCRIPTION
AT3208	32MM x 9MM x 8MM
AT3209	32MM x 9MM x 9MM
AT3210	32MM x 9MM x 10MM
AT3211	32MM x 9MM x 11MM
AT3212	32MM x 9MM x 12MM
AT3213	32MM x 9MM x 13MM

CATALOG #	DESCRIPTION
AT4008	40MM x 9MM x 8MM
AT4009	40MM x 9MM x 9MM
AT4010	40MM x 9MM x 10MM
AT4011	40MM x 9MM x 11MM
AT4012	40MM x 9MM x 12MM
AT4013	40MM x 9MM x 13MM
SD-15-FU	FLXFIT15 CARTRIDGE (SINGLE USE)

For product information, including indications for use, contraindications, warnings, precautions, potential adverse effects and patient counseling information, see the product Instructions For Use (IFU) and information on the CoreLink website. To obtain a copy of the current Instructions for Use (IFU) for full prescribing and risk information, please call CoreLink Customer Service at (888) 349-7808 or visit corelinksurgical.com/ifu. © 2020 CoreLink, LLC. All Rights Reserved. CoreLink is part of CoreLink Holdings, LLC.