



# VARISYNC®

## ALIF System

### SYSTEM OVERVIEW

The Zavation® Varisync® ALIF System is an **integrated lumbar spacer** designed to deliver **screw** or **anchor** fixation in fewer procedural steps through a less invasive surgical corridor than traditional integrated cages.

The system features versatile cage fixation options, innovative instruments that streamline implantation at the most challenging levels, and the biocompatible benefits of **NanoPrime™** and **Mimetic Metal®** technology.

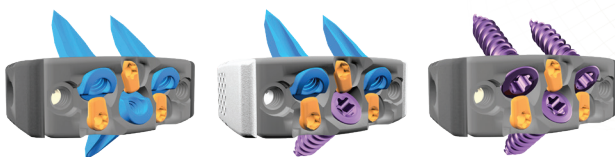
### SYSTEM FEATURES & BENEFITS

#### Advanced Cage Technology

- **NEW!** NanoPrime technology deposits a thin layer of titanium to a PEEK cage, combining the proven advantages of PEEK with clinical benefits of titanium.
- Patented Mimetic Metal titanium technology designed to emulate key characteristics of natural bone.

#### Surgical Versatility

- Comprehensive system provides a range of cage and fixation options for rigid anterior column stabilization.
- Three fixation points with reliable anti-backout camlocks.
- Innovative instruments facilitate simple implantation even with challenging patient anatomy.

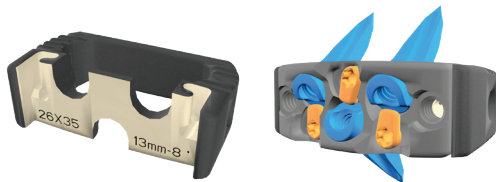


Product Brochure

# IMPLANT OVERVIEW

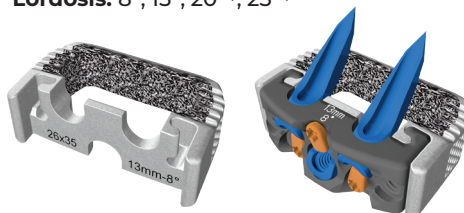
## NanoPrime™ IBF Cage

- **Footprints** (Depth x Width): 24mm x 30mm / 26mm x 35mm / 28mm x 40mm
- **Heights:** 11mm-15mm, 17mm, 19mm<sup>†</sup>, 21mm<sup>†</sup>
- **Lordosis:** 8°, 15°, 20°<sup>†</sup>
- **Coating Thickness:** 0.4 microns



## F3D-Z Cage

- **Footprints** (Depth x Width): 24mm x 30mm / 26mm x 35mm / 28mm x 40mm
- **Heights:** 11mm-15mm, 17mm, 19mm<sup>†</sup>, 21mm<sup>†</sup>
- **Lordosis:** 8°, 15°, 20°<sup>†</sup>, 25°<sup>†</sup>



## Varisync Recessed ALIF Plate

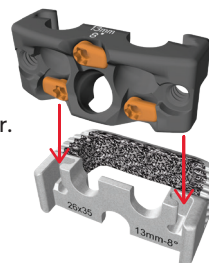
- Plate selection is based on the cage height and lordotic angle.
- The same plate fits all cage footprints of the same height and lordosis.

## Anchor Fixation

- Smooth with fixed angle design or serrated<sup>†</sup>
- **Diameter:** 6.0mm
- **Lengths:** 20mm, 25mm, 30mm
- **NOTE:** Supplemental fixation is required when using anchor fixation.

## Cage & Plate Connection

- There is a slip-fit connection between the plate and cage until connected to the inserter.



## Screw Fixation

- Fixed or variable, self-drilling and self-tapping
- **Diameter:** 5.0mm, 6.0mm (rescue)
- **Lengths:** 20mm, 25mm

# INSTRUMENTATION

## Inserter Options

Three inserter options accommodate surgeon technique or preference. Inserters are cage-height specific and retain the construct connection during the entire procedure.

- **Screw Guide Inserter** for guided technique with Varisync ALIF screw fixation.



- **Anchor Guide Inserter** for guided technique with Varisync ALIF anchor fixation.



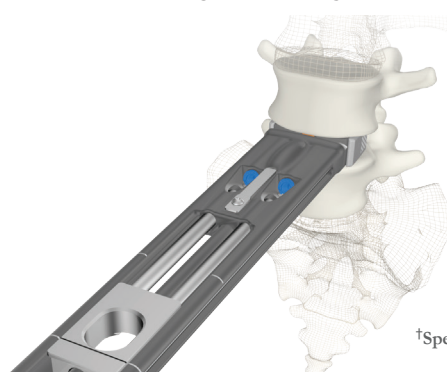
- **Freehand Inserter** for freehand technique.



## In-Line Anchor Integrated Fixation

Anchors are an ideal alternative to traditional fixation screws for surgical scenarios when screw instrumentation is limited.

This limitation may be caused by patient anatomy. The anchor instrumentation provides a minimally invasive anterior surgical working corridor.



<sup>†</sup>Special Order.

For product information, including indications, contraindications, warnings, precautions, potential adverse effect, and patient counseling information, see the package insert at [zavation.com/ifu](http://zavation.com/ifu) © 2025 Zavation Medical Products, LLC. All rights reserved.